








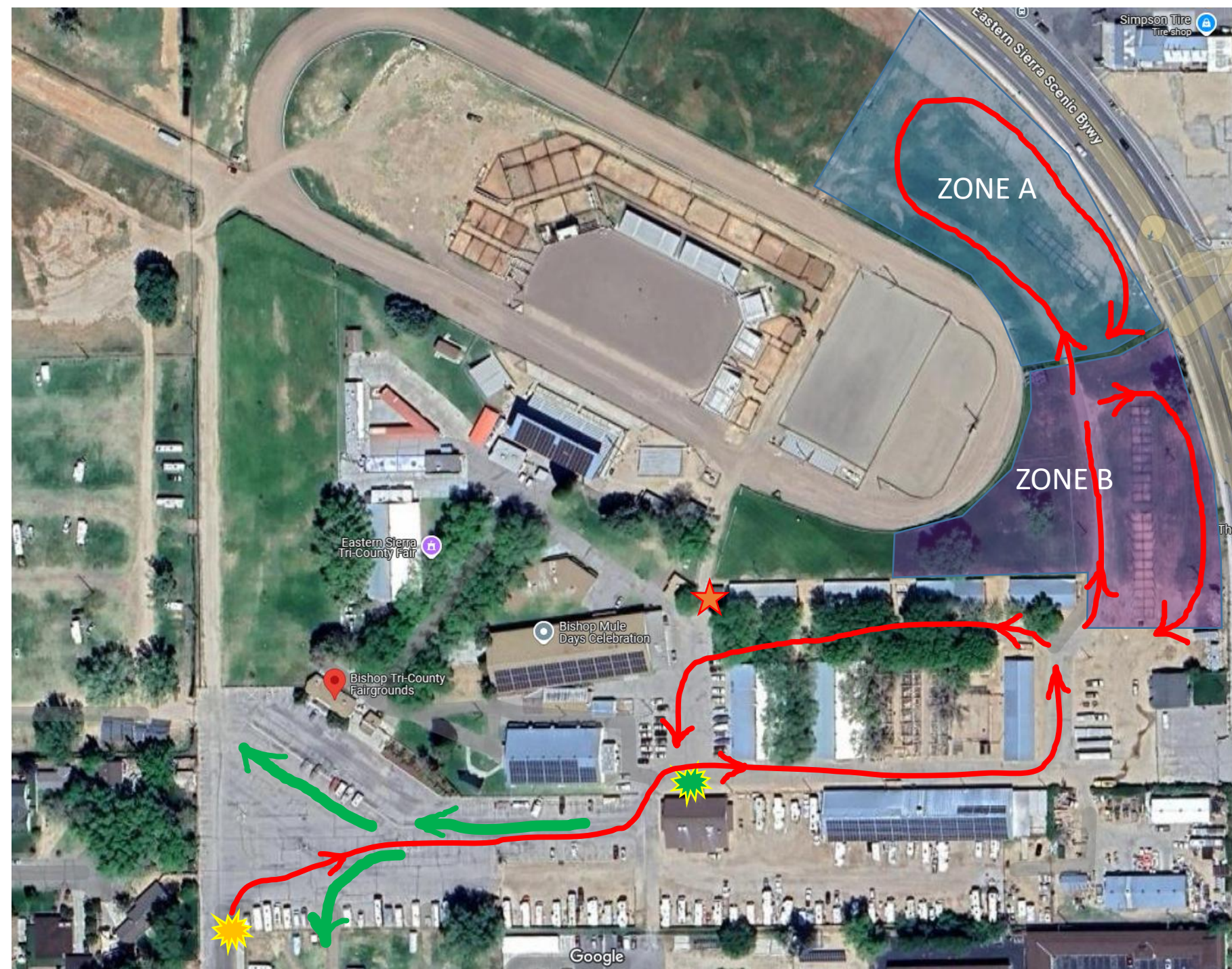



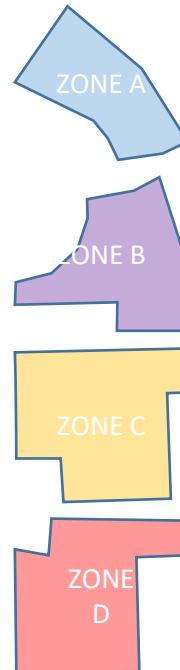
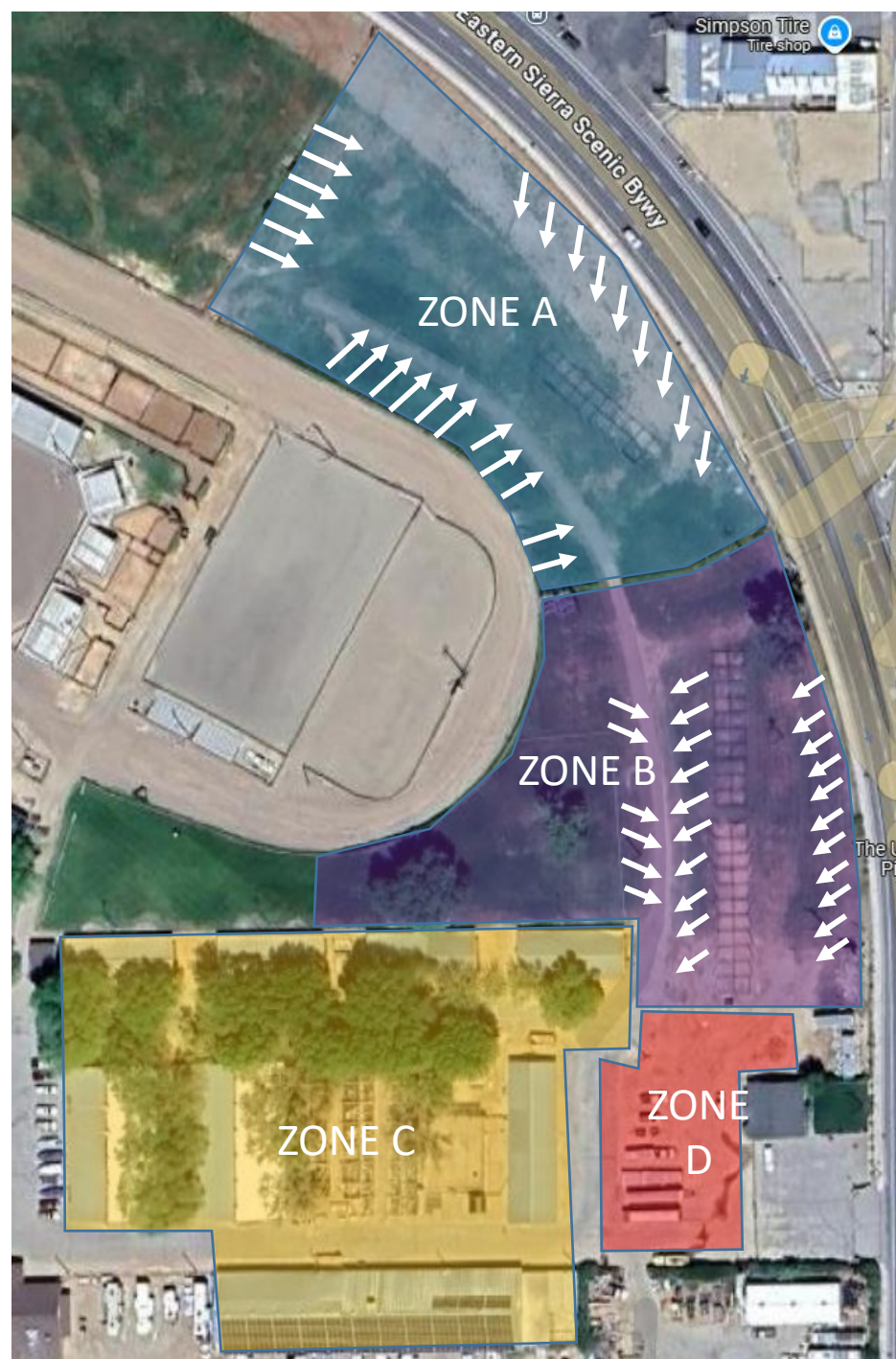


-  Eastern Sierra Tri-County Fairgrounds:
475 Sierra Street, Bishop, California
-  Getting There
-  Horse / RV Check-in
-  Contestant Check-in – Tallman Bldg
-  RV / Trailer camping – no Horses
-  Horse Trailer parking
-  Stall area /
Small horse trailer parking
-  Points of interest: Vet / Feed & Supply
-  Rodeo Office



	Horse / RV Check-in
	Contestant Check-in – Tallman Bldg
	Rodeo Office
<ul style="list-style-type: none">• Follow the red arrows for direction of traffic.• Please maintain this traffic flow throughout finals• Long trailers might not make the turn to the right in Zones A and B• Some trailers or RVs may need to turn around at the end of Zone A• Be Courteous• Horse trailer parking behind Stall Check-in• If proceeding to camping, follow the green arrows to be guided by D9 RV Parking Concierge service	



70 stalls alternating cover Stalls #481 – 555

114 stalls partial cover Stalls #331 - 480

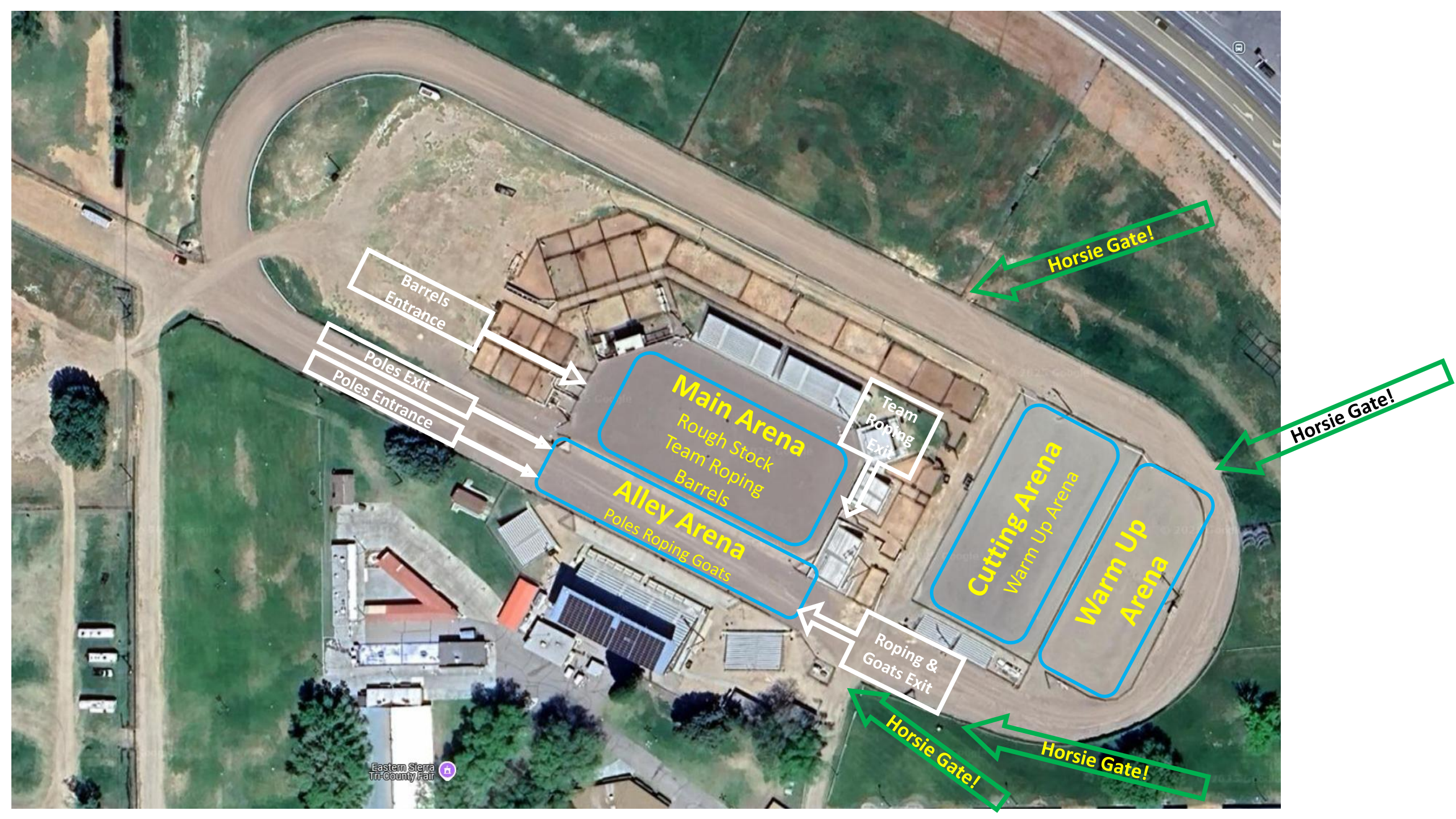
330 stalls covered or box Stalls #1 - 330

No stalls, **NO PARKING**, Oversized Cutting Trailers

Use the white arrows as the general theme for parking horse trailers only.

- Short trailers in Zone B
- No camp trailers
- Vehicles cannot take up trailer parking
- No LQ camping at all
- **DO NOT** plug in to any outlet
- **DO NOT** block gates, roads, access in any way

The contestant stall list will show zone and stall location



Barrels Entrance

Poles Exit

Poles Entrance

Team Roping Exit

Roping & Goats Exit

Main Arena
Rough Stock
Team Roping
Barrels

Alley Arena
Poles Roping
Goats

Cutting Arena
Warm Up Arena

Warm Up Arena

Horsie Gate!

Horsie Gate!

Horsie Gate!

Horsie Gate!

2	4	6	8	10	12	14	16
1	3	5	7	9	11	13	15

18	20	22	24	26	28	30	32
17	19	21	23	25	27	29	31

Wash Rack

34	36	38	40	42	44	46	48
33	35	37	39	41	43	45	47

241	242
240	243
239	244

50	52	54	56	58	60	62	64
49	51	53	55	57	59	61	63

	105		
89	104	106	107 122
	103		
90	102	108	109 121
	101		
91	100	110	120
	99	111	120
92	98	112	119 123 132
	97	113	
93	96	114	118 124 131
	95	115	
94		116	117 125 130
		127	128

Wash Rack

	150		
134	149	151	152 167
	148		
135	147	153	154 166
	146		
136	145	155	156 165
	144	157	158 164
137	143	159	160 163
	142		
138	141	161	162
	140		
139			

168			
169	179	202	221
170	180	187 201	203 220
Tree	181	188 200	204 219
171	182	189 199	205 218
172	183	190 198	206 217
173	184	191 197	207 216
174	185	192 196	208 215
175	186	193 195	209 214
176		194	210 211
177			
178			

Scale

Restrooms

222	223	224	225
231		232	233
230			234
229			235
228			236
227			237
226			238

65	66
67	68
69	70
71	72
73	74
75	76
77	78
79	80
81	82
83	84
85	86
87	88

245		246	247	248	249	250	251	252		253	254	255	256	257	258	259	260		261	262		
263	264	265	266	267	268	269	270	271	272	273	274	275	276	277	278	279	280	281	282	283	284	
303	302	301	300	299	298	297	296	295	294	293	292	291	290	289	288	287	286	285				
304	305	306	307	308	309			310	311	312	313	314	315	316	317	318	319			320	321	322

Zone C



468	467	466	465	464	463	462	461
459	454	455	456	457	458	459	460

445	444
446	443
447	442
448	441
449	440
450	439
451	438
452	437

351	352	353	354
350	349	348	347

329	330	331	332	333	334
328	327	326	325	324	323

341	342	343	344	345	346
340	339	338	337	336	335

375	376
374	377
373	378
372	379
371	380
370	381
369	382
368	383
367	384
366	385

416	417
415	418
414	419
413	420
412	421
411	422
410	423
409	424
408	425

365	386
364	387
363	388
362	389
361	390
360	391
359	392
358	393
357	394
356	395
355	396

407	426
406	427
405	428
404	429
403	430
402	431
401	432
400	433
399	434
398	435
397	436

Zone B

Zone A

547	548	549	550
546	545	544	543

537	538	539	540	541	542
536	535	534	533	532	531

503	509
507	510
506	511
505	512
504	513
503	514
502	515
501	516
500	517
499	518
498	519
497	520

496	521
495	522
494	523
493	524
492	525
491	526
490	527
489	528
488	529
487	530

482	481	480	479
483	484	485	486

469	470	471	472	473
478	477	476	475	474

1228

1240

Eastern Sierra

Kelley Field RV Parking Fill back to front!

- 30 Amp Power is grouped – each shaded space shares the lightning bolt
- Typically, a unit with 2 AC's can only run 1, with 30 amps
- Water is shared with splitters
- Bring Extension cords and hoses
- Dry Camping



Dist	Member	Zone	Area	Stall	Type
1	H-CA-000064	C	Sale Barn	293	Covered
1	H-CA-000150	B	Permanent	370	Shaded
1	H-CA-000150	B	Permanent	371	Shaded
1	H-CA-000209	C	Barn 5	88	Box
1	H-CA-000211	B	Permanent	398	Shaded
1	H-CA-000218	A	Out North	510	Partial
1	H-CA-000250	C	Covered 2	162	Covered
1	H-CA-000313	B	Grass	351	Open
1	H-CA-000313	B	Grass	352	Open
1	H-CA-000318	C	Covered 1	96	Covered
1	H-CA-000318	C	Covered 1	97	Covered
1	H-CA-000318	C	Covered 1	98	Covered
1	H-CA-000345	B	Permanent	416	Shaded
1	H-CA-000345	B	Permanent	417	Shaded
1	H-CA-000345	B	Permanent	418	Shaded
1	H-CA-000351	C	Barn 3	43	Box
1	H-CA-000351	C	Barn 3	45	Box
1	H-CA-000352	C	Cattle Pens	196	Shaded
1	H-CA-000357	C	Barn 4	63	Box
1	H-CA-000377	B	Grass	437	Open
1	H-CA-000407	A	Out North	504	Partial
1	H-CA-000412	C	Barn 3	47	Box
1	H-CA-000425	B	Permanent	434	Shaded
1	H-CA-000425	B	Permanent	435	Shaded
1	H-CA-000432	B	Grass	327	Open
1	H-CA-000432	B	Grass	328	Open
1	H-CA-000449	B	Permanent	409	Shaded
1	H-CA-000449	B	Permanent	410	Shaded
1	H-CA-000449	B	Permanent	411	Shaded
1	H-CA-000449	B	Permanent	412	Shaded

D1 Stalls

Dist	Member	Zone	Area	Stall	Type
1	H-CA-000450	A	Out North	505	Partial
1	H-CA-000467	C	Covered 1	94	Covered
1	H-CA-000467	C	Covered 1	95	Covered
1	H-CA-000478	B	Permanent	364	Shaded
1	H-CA-000478	B	Permanent	365	Shaded
1	H-CA-000478	B	Permanent	366	Shaded
1	H-CA-000508	A	Out North	507	Partial
1	H-CA-000515	A	Out South	495	Partial
1	H-CA-000546	B	Permanent	397	Shaded
1	H-CA-000593	C	Wash Rack	129	Shaded
1	H-CA-000593	C	Wash Rack	130	Shaded
1	H-CA-000593	C	Wash Rack	131	Shaded
1	H-CA-000629	C	Barn 4	64	Box
1	H-CA-000651	C	Covered 1	123	Covered
1	H-CA-000651	C	Covered 1	124	Covered
1	H-CA-000697	B	Permanent	421	Shaded
1	H-CA-000697	B	Permanent	422	Shaded
1	H-CA-000761	B	Grass	326	Open
1	H-CA-000810	C	Cattle Pens	195	Shaded
1	H-CA-000821	C	Cattle Pens	186	Open
1	H-CA-000945	B	Grass	325	Open
1	H-CA-000950	C	Cattle Pens	203	Shaded
1	H-CA-000950	C	Cattle Pens	204	Shaded
1	H-CA-000950	C	Cattle Pens	205	Shaded
1	H-CA-000950	C	Cattle Pens	206	Shaded
1	H-CA-000971	C	Covered 1	126	Covered
1	H-CA-001036	C	Covered 1	125	Covered
1	H-CA-001041	C	Barn 1	4	Box
1	H-CA-001059	C	Sale Barn	295	Covered
1	H-CA-001078	B	Permanent	405	Shaded

Dist	Member	Zone	Area	Stall	Type
2	H-CA-000023	C	Barn 3	34	Box
2	H-CA-000097	C	Sale Barn	317	Covered
2	H-CA-000097	C	Sale Barn	318	Covered
2	H-CA-000102	C	Sale Barn	316	Covered
2	H-CA-000116	B	Permanent	384	Shaded
2	H-CA-000116	B	Permanent	385	Shaded
2	H-CA-000127	C	Sale Barn	296	Covered
2	H-CA-000210	B	Permanent	419	Shaded
2	H-CA-000210	B	Permanent	420	Shaded
2	H-CA-000259	A	Out North	519	Partial
2	H-CA-000260	B	Grass	446	Open
2	H-CA-000260	B	Grass	447	Open
2	H-CA-000261	A	Out North	502	Partial
2	H-CA-000262	C	Sale Barn	314	Covered
2	H-CA-000262	C	Sale Barn	315	Covered
2	H-CA-000331	C	Barn 2	30	Box
2	H-CA-000332	B	Grass	444	Open
2	H-CA-000332	B	Grass	445	Open
2	H-CA-000369	A	Out South	521	Partial

D2 Stalls

Dist	Member	Zone	Area	Stall	Type
2	H-CA-000374	C	Barn 5	80	Box
2	H-CA-000374	C	Barn 5	82	Box
2	H-CA-000405	C	Cattle Pens	181	Shaded
2	H-CA-000435	C	Barn 3	36	Box
2	H-CA-000435	C	Barn 3	38	Box
2	H-CA-000519	C	Covered 2	151	Shaded
2	H-CA-000642	A	Out North	501	Partial
2	H-CA-000661	C	Barn 5	66	Box
2	H-CA-000704	C	Barn 4	54	Box
2	H-CA-000704	C	Barn 4	56	Box
2	H-CA-000704	C	Barn 4	58	Box
2	H-CA-000713	C	Cattle Pens	202	Shaded
2	H-CA-000793	A	Out North	513	Partial
2	H-CA-000897	B	Permanent	436	Shaded
2	H-CA-000907	C	Restrooms	219	Open
2	H-CA-000907	C	Restrooms	220	Open
2	H-CA-000959	C	Restrooms	221	Open
2	H-CA-001055	C	Restrooms	222	Open
2	H-CA-001064	C	Sale Barn	297	Covered

Dist	Member	Zone	Area	Stall	Type
3	H-CA-000083	C	Cattle Pens	207	Shaded
3	H-CA-000083	C	Cattle Pens	208	Shaded
3	H-CA-000083	C	Cattle Pens	209	Shaded
3	H-CA-000083	C	Cattle Pens	210	Shaded
3	H-CA-000113	B	Grass	440	Open
3	H-CA-000113	B	Grass	441	Open
3	H-CA-000113	B	Grass	442	Open
3	H-CA-000114	C	Barn 4	57	Box
3	H-CA-000114	C	Barn 4	59	Box
3	H-CA-000123	C	Sale Barn	289	Covered
3	H-CA-000123	C	Sale Barn	290	Covered
3	H-CA-000125	B	Grass	347	Open
3	H-CA-000141	C	Barn 5	73	Box
3	H-CA-000142	B	Permanent	390	Shaded
3	H-CA-000142	B	Permanent	391	Shaded
3	H-CA-000177	C	Sale Barn	302	Covered
3	H-CA-000177	C	Sale Barn	303	Covered
3	H-CA-000177	C	Sale Barn	304	Covered
3	H-CA-000291	C	Barn 3/4	239	Shaded
3	H-CA-000293	C	Cattle Pens	194	Shaded
3	H-CA-000295	C	Cattle Pens	212	Open
3	H-CA-000295	C	Cattle Pens	213	Open
3	H-CA-000295	C	Cattle Pens	214	Open
3	H-CA-000295	C	Cattle Pens	215	Open
3	H-CA-000300	C	Stock Pen	234	Shaded
3	H-CA-000300	C	Stock Pen	235	Shaded
3	H-CA-000321	B	Permanent	388	Shaded
3	H-CA-000321	B	Permanent	389	Shaded
3	H-CA-000381	B	Grass	333	Open
3	H-CA-000381	B	Grass	334	Open

D3 Stalls

Dist	Member	Zone	Area	Stall	Type
3	H-CA-000396	C	Barn 2	17	Box
3	H-CA-000396	C	Barn 2	19	Box
3	H-CA-000396	C	Barn 2	21	Box
3	H-CA-000468	A	Out North	506	Partial
3	H-CA-000492	C	Sale Barn	277	Covered
3	H-CA-000507	C	Barn 3/4	240	Shaded
3	H-CA-000507	C	Barn 3/4	241	Shaded
3	H-CA-000544	C	Covered 2	144	Covered
3	H-CA-000544	C	Covered 2	145	Covered
3	H-CA-000544	C	Covered 2	146	Covered
3	H-CA-000544	C	Covered 2	147	Covered
3	H-CA-000549	B	Grass	450	Open
3	H-CA-000619	A	Out South	496	Partial
3	H-CA-000619	A	Out North	497	Partial
3	H-CA-0006542	A	Out South	494	Partial
3	H-CA-000669	B	Permanent	432	Shaded
3	H-CA-000669	B	Permanent	433	Shaded
3	H-CA-000706	C	Barn 3	48	Box
3	H-CA-000757	C	Barn 3/4	244	Shaded
3	H-CA-000763	C	Sale Barn	261	Covered
3	H-CA-000763	C	Sale Barn	262	Covered
3	H-CA-000795	A	Out North	500	Partial
3	H-CA-000816	C	Covered 2	142	Covered
3	H-CA-000816	C	Covered 2	143	Covered
3	H-CA-000817	B	Permanent	358	Shaded
3	H-CA-000817	B	Permanent	359	Shaded
3	H-CA-000817	B	Permanent	360	Shaded
3	H-CA-000846	C	Barn 5	83	Box
3	H-CA-000846	C	Barn 5	85	Box
3	H-CA-000956	C	Covered 1	120	Covered
3	H-CA-000956	C	Covered 1	121	Covered
3	H-CA-000956	C	Covered 1	122	Covered
3	H-CA-001057	C	Barn 1	6	Box

Dist	Member	Zone	Area	Stall	Type
4	H-CA-000112	C	Covered 1	111	Covered
4	H-CA-000112	C	Covered 1	112	Covered
4	H-CA-000112	C	Covered 1	113	Covered
4	H-CA-000112	C	Covered 1	114	Covered
4	H-CA-000112	C	Covered 1	115	Covered
4	H-CA-000152	C	Stock Pen	226	Open
4	H-CA-000152	C	Stock Pen	227	Shaded
4	H-CA-000152	C	Stock Pen	228	Shaded
4	H-CA-000172	C	Barn 1	2	Box
4	H-CA-000172	B	Grass	341	Open
4	H-CA-000172	B	Grass	342	Open
4	H-CA-000174	C	Sale Barn	267	Covered
4	H-CA-000174	C	Sale Barn	268	Covered
4	H-CA-000174	C	Sale Barn	269	Covered
4	H-CA-000180	C	Sale Barn	305	Covered
4	H-CA-000180	C	Sale Barn	306	Covered
4	H-CA-000180	C	Sale Barn	307	Covered
4	H-CA-000192	A	Out North	512	Partial
4	H-CA-000254	C	Sale Barn	294	Covered
4	H-CA-000276	C	Barn 1	8	Box
4	H-CA-000276	C	Covered 1	89	Covered
4	H-CA-000276	C	Covered 1	90	Covered
4	H-CA-000276	C	Covered 1	91	Covered
4	H-CA-000283	C	Wash Rack	132	Shaded
4	H-CA-000283	C	Wash Rack	133	Shaded
4	H-CA-000308	C	Covered 1	106	Shaded
4	H-CA-000308	C	Covered 1	107	Covered
4	H-CA-000308	C	Covered 1	108	Covered
4	H-CA-000308	C	Covered 1	109	Covered
4	H-CA-000308	C	Covered 1	110	Covered
4	H-CA-000349	B	Permanent	413	Shaded
4	H-CA-000349	B	Permanent	414	Shaded
4	H-CA-000349	B	Permanent	415	Shaded

D4 Stalls

Dist	Member	Zone	Area	Stall	Type
4	H-CA-000384	C	Wash Rack	134	Shaded
4	H-CA-000384	C	Covered 2	135	Covered
4	H-CA-000384	C	Covered 2	136	Covered
4	H-CA-000384	C	Covered 2	137	Covered
4	H-CA-000384	C	Covered 2	138	Covered
4	H-CA-000384	C	Covered 2	139	Covered
4	H-CA-000384	C	Covered 2	140	Covered
4	H-CA-000386	C	Sale Barn	319	Covered
4	H-CA-000386	C	Sale Barn	320	Covered
4	H-CA-000388	C	Covered 2	141	Covered
4	H-CA-000424	C	Stock Pen	236	Shaded
4	H-CA-000427	C	Covered 2	157	Covered
4	H-CA-000427	C	Covered 2	158	Covered
4	H-CA-000427	C	Covered 2	159	Covered
4	H-CA-000473	B	Permanent	399	Shaded
4	H-CA-000481	A	Out North	515	Partial
4	H-CA-000512	C	Sale Barn	246	Covered
4	H-CA-000512	C	Sale Barn	247	Covered
4	H-CA-000512	C	Sale Barn	248	Covered
4	H-CA-000512	C	Sale Barn	249	Covered
4	H-CA-000512	C	Sale Barn	250	Covered
4	H-CA-000682	C	Sale Barn	263	Covered
4	H-CA-000682	C	Sale Barn	264	Covered
4	H-CA-000682	C	Sale Barn	265	Covered
4	H-CA-000682	C	Sale Barn	266	Covered
4	H-CA-000819	C	Wash Rack	119	Shaded
4	H-CA-000828	C	Sale Barn	322	Covered
4	H-CA-000838	B	Permanent	403	Shaded
4	H-CA-001034	C	Stock Pen	232	Shaded
4	H-CA-001034	C	Stock Pen	233	Shaded

Dist	Member	Zone	Area	Stall	Type
5	H-CA-000085	C	Barn 4	49	Box
5	H-CA-000085	C	Barn 4	51	Box
5	H-CA-000085	C	Barn 4	53	Box
5	H-CA-000085	C	Barn 4	55	Box
5	H-CA-000273	C	Sale Barn	287	Covered
5	H-CA-000273	C	Sale Barn	288	Covered
5	H-CA-000493	B	Grass	349	Open
5	H-CA-000493	B	Grass	350	Open
5	H-CA-000498	C	Sale Barn	285	Covered
5	H-CA-000498	C	Sale Barn	286	Covered
5	H-CA-000501	C	Barn 3	35	Box
5	H-CA-000550	C	Covered 1	101	Covered
5	H-CA-000550	C	Covered 1	102	Covered
5	H-CA-000550	C	Covered 1	103	Covered
5	H-CA-000550	C	Covered 1	104	Covered
5	H-CA-000550	C	Covered 1	105	Shaded
5	H-CA-000580	C	Barn 1	5	Box
5	H-CA-000580	C	Barn 1	7	Box
5	H-CA-000581	B	Permanent	425	Shaded
5	H-CA-000581	B	Permanent	426	Shaded
5	H-CA-000598	C	Barn 1	10	Box
5	H-CA-000598	B	Grass	346	Open
5	H-CA-000599	A	Out North	522	Partial
5	H-CA-000599	A	Out South	523	Partial
5	H-CA-000617	C	Covered 2	152	Shaded
5	H-CA-000617	C	Covered 2	153	Covered
5	H-CA-000617	C	Covered 2	154	Covered
5	H-CA-000617	C	Covered 2	155	Covered
5	H-CA-000617	C	Covered 2	156	Covered
5	H-CA-000623	C	Covered 2	164	Covered
5	H-CA-000640	A	Out North	517	Partial
5	H-CA-000690	A	Out North	508	Partial
5	H-CA-000690	A	Out North	509	Partial

D5 Stalls

Dist	Member	Zone	Area	Stall	Type
5	H-CA-000715	B	Permanent	427	Shaded
5	H-CA-000727	A	Out North	499	Partial
5	H-CA-000736	C	Sale Barn	251	Covered
5	H-CA-000736	C	Sale Barn	252	Covered
5	H-CA-000736	C	Sale Barn	253	Covered
5	H-CA-000736	C	Sale Barn	254	Covered
5	H-CA-000755	B	Grass	329	Open
5	H-CA-000755	B	Grass	330	Open
5	H-CA-000755	B	Grass	331	Open
5	H-CA-000755	B	Grass	332	Open
5	H-CA-000806	C	Restrooms	223	Open
5	H-CA-000807	A	Out North	516	Partial
5	H-CA-000809	C	Barn 3	40	Box
5	H-CA-000809	C	Barn 3	42	Box
5	H-CA-000809	C	Barn 3	44	Box
5	H-CA-000861	C	Covered 2	160	Covered
5	H-CA-000861	C	Covered 2	161	Covered
5	H-CA-000889	C	Cattle Pens	189	Shaded
5	H-CA-000889	C	Cattle Pens	190	Shaded
5	H-CA-000895	C	Sale Barn	308	Covered
5	H-CA-000895	C	Sale Barn	309	Covered
5	H-CA-000895	C	Sale Barn	310	Covered
5	H-CA-000932	C	Covered 2	163	Covered
5	H-CA-001009	C	Barn 3	46	Box
5	H-CA-001018	B	Permanent	386	Shaded
5	H-CA-001018	B	Permanent	387	Shaded
5	H-CA-001040	C	Sale Barn	273	Covered
5	H-CA-001040	C	Sale Barn	274	Covered
5	H-CA-001056	C	Stock Pen	238	Covered
5	H-CA-001093	B	Permanent	382	Shaded
5	H-CA-001093	B	Permanent	383	Shaded

Dist	Member	Zone	Area	Stall	Type
6	H-CA-000034	B	Permanent	374	Shaded
6	H-CA-000078	C	Barn 1	1	Box
6	H-CA-000078	C	Barn 1	3	Box
6	H-CA-000078	C	Covered 1	92	Covered
6	H-CA-000078	C	Covered 1	93	Covered
6	H-CA-000144	C	Sale Barn	300	Covered
6	H-CA-000144	C	Sale Barn	301	Covered
6	H-CA-000224	C	Barn 1	12	Box
6	H-CA-000224	B	Grass	343	Open
6	H-CA-000225	B	Permanent	406	Shaded
6	H-CA-000226	C	Barn 3	33	Box
6	H-CA-000265	B	Permanent	394	Shaded
6	H-CA-000280	B	Grass	340	Open
6	H-CA-000340	C	Sale Barn	299	Covered
6	H-CA-000344	B	Permanent	430	Shaded
6	H-CA-000344	B	Permanent	431	Shaded
6	H-CA-000346	B	Grass	448	Open
6	H-CA-000346	B	Grass	449	Open
6	H-CA-000431	B	Permanent	408	Shaded
6	H-CA-000463	A	Out South	493	Partial
6	H-CA-000482	C	Covered 2	165	Covered
6	H-CA-000482	C	Covered 2	166	Covered
6	H-CA-000482	C	Covered 2	167	Covered
6	H-CA-000528	C	Sale Barn	270	Covered
6	H-CA-000528	C	Sale Barn	271	Covered
6	H-CA-000528	C	Sale Barn	272	Covered

D6 Stalls

Dist	Member	Zone	Area	Stall	Type
6	H-CA-000614	B	Grass	344	Open
6	H-CA-000614	B	Grass	345	Open
6	H-CA-000665	A	Out North	503	Partial
6	H-CA-000722	C	Sale Barn	275	Covered
6	H-CA-000722	C	Sale Barn	276	Covered
6	H-CA-000752	A	Out South	487	Partial
6	H-CA-000752	A	Out South	488	Partial
6	H-CA-000752	A	Out South	489	Partial
6	H-CA-000775	A	Out South	490	Partial
6	H-CA-000775	A	Out South	491	Partial
6	H-CA-000775	A	Out South	492	Partial
6	H-CA-000843	C	Cattle Pens	171	Shaded
6	H-CA-000843	C	Cattle Pens	172	Shaded
6	H-CA-000937	C	Barn 2	26	Box
6	H-CA-000937	C	Barn 2	28	Box
6	H-CA-000951	C	Barn 2	31	Box
6	H-CA-000951	C	Cattle Pens	168	Shaded
6	H-CA-000951	C	Cattle Pens	169	Shaded
6	H-CA-000951	C	Cattle Pens	170	Shaded
6	H-CA-000974	C	Cattle Pens	177	Shaded
6	H-CA-000974	C	Cattle Pens	178	Shaded
6	H-NV-000068	C	Barn 4	61	Box

Dist	Member	Zone	Area	Stall	Type
7	H-CA-000091	B	Grass	353	Open
7	H-CA-000091	B	Grass	354	Open
7	H-CA-000094	C	Cattle Pens	193	Open
7	H-CA-000109	C	Sale Barn	298	Covered
7	H-CA-000110	C	Barn 5	65	Box
7	H-CA-000134	C	Barn 4	62	Box
7	H-CA-000134	B	Grass	323	Open
7	H-CA-000134	B	Grass	324	Open
7	H-CA-000151	C	Barn 1	14	Box
7	H-CA-000163	C	Cattle Pens	179	Shaded
7	H-CA-000164	B	Permanent	355	Shaded
7	H-CA-000164	B	Permanent	356	Shaded
7	H-CA-000164	B	Permanent	357	Shaded
7	H-CA-000165	C	Barn 5	84	Box
7	H-CA-000165	C	Barn 5	86	Box
7	H-CA-000190	C	Barn 4	60	Box
7	H-CA-000251	B	Grass	348	Open
7	H-CA-000275	B	Grass	339	Open
7	H-CA-000302	C	Wash Rack	118	Shaded
7	H-CA-000390	B	Permanent	428	Shaded
7	H-CA-000390	B	Permanent	429	Shaded
7	H-CA-000485	B	Grass	438	Open
7	H-CA-000485	B	Grass	439	Open
7	H-CA-000573	C	Barn 5	68	Box
7	H-CA-000573	C	Barn 5	70	Box
7	H-CA-000573	C	Barn 5	72	Box
7	H-CA-000573	C	Barn 5	74	Box
7	H-CA-000594	B	Grass	443	Open
7	H-CA-000600	C	Stock Pen	229	Shaded
7	H-CA-000600	C	Stock Pen	230	Shaded
7	H-CA-000609	B	Permanent	361	Shaded
7	H-CA-000609	B	Permanent	362	Shaded
7	H-CA-000609	B	Permanent	363	Shaded
7	H-CA-000676	C	Barn 3/4	242	Shaded
7	H-CA-000676	C	Barn 3/4	243	Shaded

D7 Stalls

Dist	Member	Zone	Area	Stall	Type
7	H-CA-000681	A	Out North	498	Partial
7	H-CA-000684	C	Sale Barn	311	Covered
7	H-CA-000684	C	Sale Barn	312	Covered
7	H-CA-000684	C	Sale Barn	313	Covered
7	H-CA-000692	B	Grass	336	Open
7	H-CA-000692	B	Grass	337	Open
7	H-CA-000698	B	Grass	335	Open
7	H-CA-000708	C	Stock Pen	231	Shaded
7	H-CA-000719	C	Barn 5	67	Box
7	H-CA-000719	C	Barn 5	69	Box
7	H-CA-000724	B	Permanent	393	Shaded
7	H-CA-000801	C	Wash Rack	117	Shaded
7	H-CA-000814	C	Cattle Pens	216	Open
7	H-CA-000814	C	Cattle Pens	217	Open
7	H-CA-000818	C	Cattle Pens	191	Shaded
7	H-CA-000818	C	Cattle Pens	192	Shaded
7	H-CA-000822	A	Out North	514	Partial
7	H-CA-000825	A	Out South	520	Partial
7	H-CA-000834	C	Covered 1	99	Covered
7	H-CA-000834	C	Covered 1	100	Covered
7	H-CA-000848	B	Permanent	400	Shaded
7	H-CA-000848	B	Permanent	401	Shaded
7	H-CA-000938	C	Stock Pen	237	Shaded
7	H-CA-000968	B	Grass	338	Open
7	H-CA-000993	C	Restrooms	218	Open
7	H-CA-000997	B	Permanent	375	Shaded
7	H-CA-001021	B	Permanent	372	Shaded
7	H-CA-001021	B	Permanent	373	Shaded
7	H-CA-001037	C	Sale Barn	291	Covered
7	H-CA-001037	C	Sale Barn	292	Covered
7	H-CA-001106	C	Barn 4	50	Box
7	H-CA-001106	C	Barn 4	52	Box

Dist	Member	Zone	Area	Stall	Type
8	H-CA-000029	B	Permanent	404	Shaded
8	H-CA-000037	C	Sale Barn	245	Covered
8	H-CA-000069	C	Barn 2	22	Box
8	H-CA-000069	C	Barn 2	24	Box
8	H-CA-000104	C	Barn 3	37	Box
8	H-CA-000104	C	Barn 3	39	Box
8	H-CA-000106	C	Barn 1	16	Box
8	H-CA-000107	B	Permanent	378	Shaded
8	H-CA-000107	B	Permanent	379	Shaded
8	H-CA-000131	B	Permanent	402	Shaded
8	H-CA-000185	B	Permanent	392	Shaded
8	H-CA-000223	C	Sale Barn	258	Covered
8	H-CA-000223	C	Sale Barn	259	Covered
8	H-CA-000223	C	Sale Barn	260	Covered
8	H-CA-000312	C	Sale Barn	280	Covered
8	H-CA-000312	C	Sale Barn	281	Covered
8	H-CA-000312	C	Sale Barn	282	Covered
8	H-CA-000368	A	Out North	511	Partial
8	H-CA-000500	A	Out North	518	Partial
8	H-CA-000505	C	Barn 2	27	Box
8	H-CA-000505	C	Barn 2	29	Box
8	H-CA-000557	B	Permanent	423	Shaded
8	H-CA-000557	B	Permanent	424	Shaded

D8 Stalls

Dist	Member	Zone	Area	Stall	Type
8	H-CA-000625	C	Cattle Pens	173	Shaded
8	H-CA-000625	C	Cattle Pens	174	Shaded
8	H-CA-000728	C	Sale Barn	321	Covered
8	H-CA-000743	C	Barn 2	23	Box
8	H-CA-000743	C	Barn 2	25	Box
8	H-CA-000751	C	Barn 3	41	Box
8	H-CA-000766	C	Sale Barn	283	Covered
8	H-CA-000766	C	Sale Barn	284	Covered
8	H-CA-000953	C	Cattle Pens	198	Shaded
8	H-CA-000953	C	Cattle Pens	199	Shaded
8	H-CA-001020	C	Cattle Pens	187	Shaded
8	H-CA-001020	C	Cattle Pens	188	Shaded
8	H-CA-001028	B	Permanent	395	Shaded
8	H-CA-001030	C	Cattle Pens	197	Shaded
8	H-CA-001032	C	Covered 1	116	Covered
8	H-CA-001076	B	Permanent	396	Shaded
8	H-CA-001099	C	Barn 2	32	Box
8	H-CA-001101	C	Wash Rack	127	Shaded
8	H-CA-001101	C	Wash Rack	128	Shaded
8	H-CA-001102	C	Barn 5	76	Box
8	H-CA-001102	C	Barn 5	78	Box

Dist	Member	Zone	Area	Stall	Type
9	H-CA-000096	C	Sale Barn	255	Covered
9	H-CA-000096	C	Sale Barn	256	Covered
9	H-CA-000096	C	Sale Barn	257	Covered
9	H-CA-000099	C	Restrooms	224	Open
9	H-CA-000099	C	Restrooms	225	Open
9	H-CA-000124	B	Permanent	380	Shaded
9	H-CA-000124	B	Permanent	381	Shaded
9	H-CA-000126	B	Permanent	376	Shaded
9	H-CA-000126	B	Permanent	377	Shaded
9	H-CA-000135	B	Permanent	367	Shaded
9	H-CA-000135	B	Permanent	368	Shaded
9	H-CA-000135	B	Permanent	369	Shaded
9	H-CA-000145	C	Cattle Pens	211	Open
9	H-CA-000156	B	Permanent	407	Shaded
9	H-CA-000191	C	Sale Barn	278	Covered
9	H-CA-000191	C	Sale Barn	279	Covered
9	H-CA-000205	C	Cattle Pens	180	Shaded
9	H-CA-000208	C	Barn 5	71	Box
9	H-CA-000217	C	Barn 5	87	Box
9	H-CA-000248	C	Barn 2	18	Box
9	H-CA-000248	C	Barn 2	20	Box

D9 Stalls

Dist	Member	Zone	Area	Stall	Type
9	H-CA-000327	C	Covered 2	148	Covered
9	H-CA-000327	C	Covered 2	149	Covered
9	H-CA-000327	C	Covered 2	150	Covered
9	H-CA-000402	C	Cattle Pens	182	Shaded
9	H-CA-000402	C	Cattle Pens	183	Shaded
9	H-CA-000402	C	Cattle Pens	184	Shaded
9	H-CA-000402	C	Cattle Pens	185	Shaded
9	H-CA-000769	C	Barn 1	13	Box
9	H-CA-000769	C	Barn 1	15	Box
9	H-CA-000857	C	Barn 5	75	Box
9	H-CA-000857	C	Barn 5	77	Box
9	H-CA-000857	C	Barn 5	79	Box
9	H-CA-000857	C	Barn 5	81	Box
9	H-CA-000992	C	Cattle Pens	175	Shaded
9	H-CA-000992	C	Cattle Pens	176	Shaded
9	H-CA-001003	C	Barn 1	9	Box
9	H-CA-001003	C	Barn 1	11	Box
9	H-CA-001023	C	Cattle Pens	200	Shaded
9	H-CA-001023	C	Cattle Pens	201	Shaded